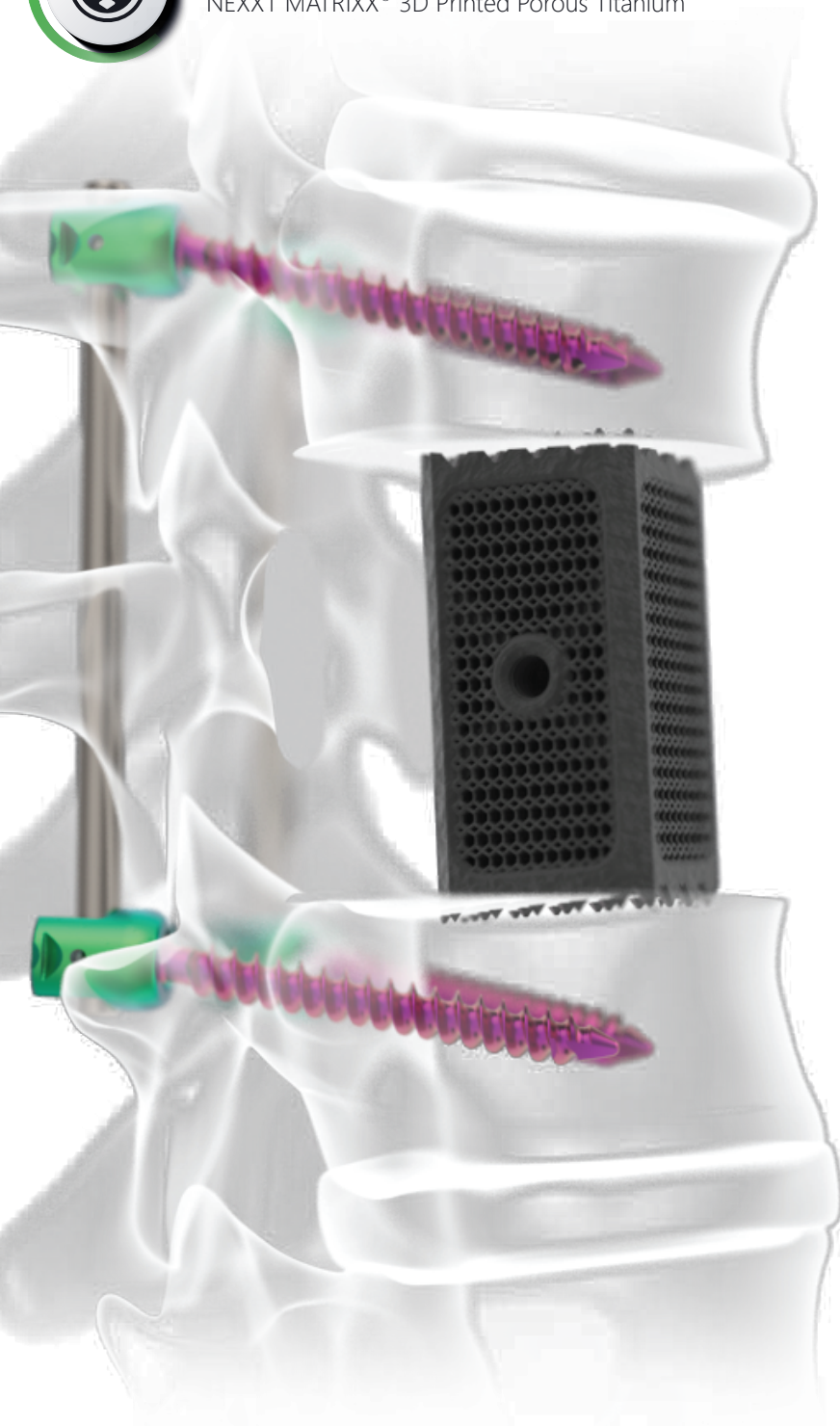
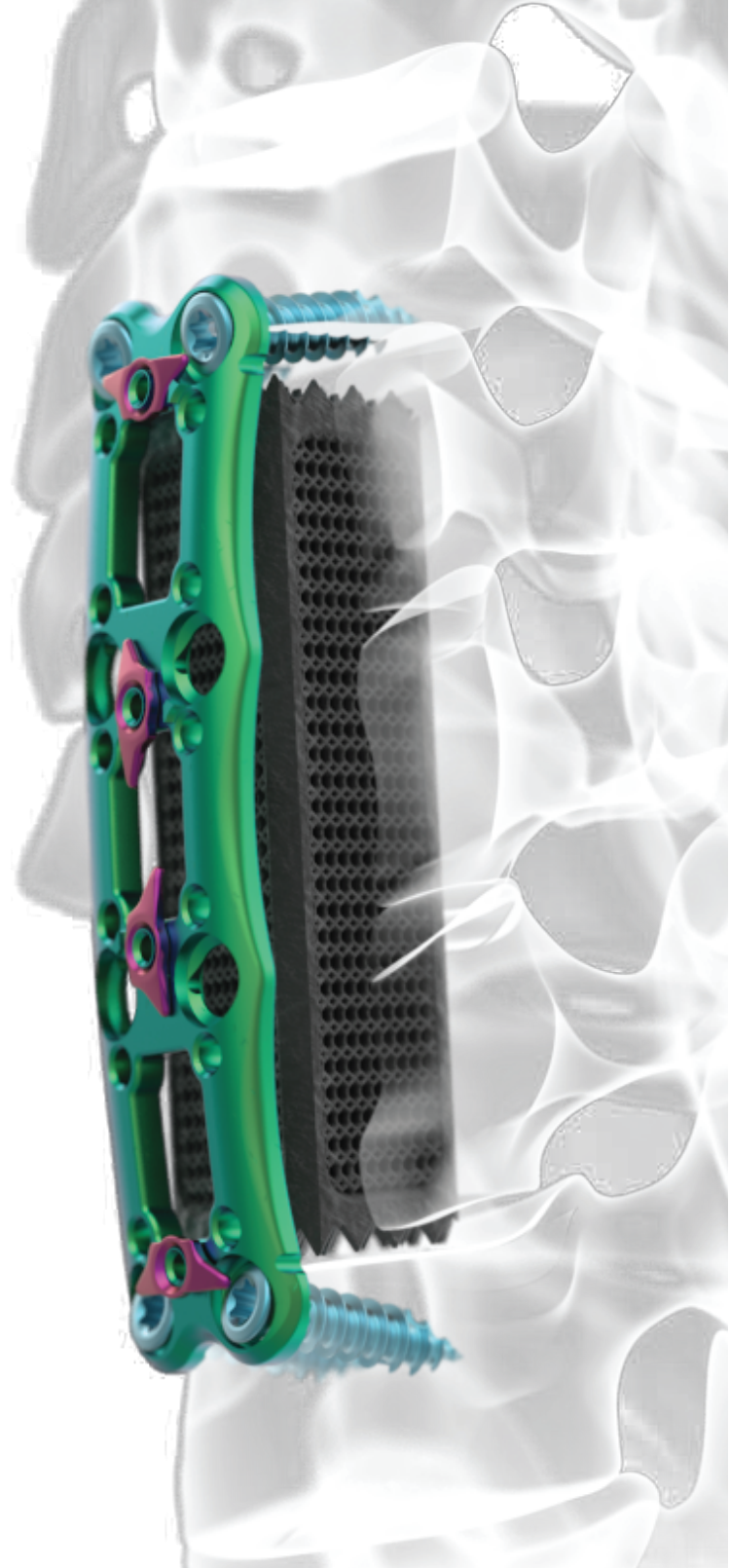




**CORPECTOMY**  
NEXXT MATRIX<sup>®</sup> 3D Printed Porous Titanium



With INERTIA<sup>®</sup> Pedicle Screw System



With STRUXURE<sup>®</sup> Anterior Cervical Plate

**NEXXT**  
Spine

317-436-7801  
INFO@NEXXTSPINE.COM  
14425 BERGEN BLVD, STE B  
NOBLESVILLE, IN 46060  
70-069E, Rev A



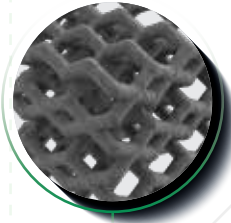
# NEXXT MATRIXX®

3D Printed porous titanium

# CORPECTOMY

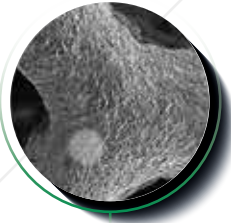
Total implant lattice integration

10X



Systematic Titanium  
300, 500, 700µ

300X



Uncompromising  
MACROSURFACE

10,000X



7µ Surface  
MICROSURFACE

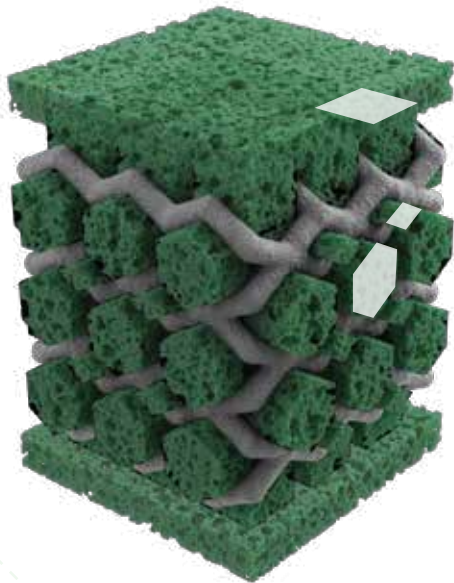


Image represents potential bony ingrowth



## TI PORES

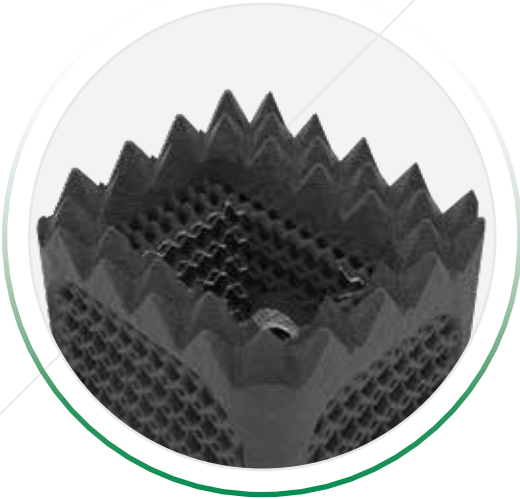
- NEXXT MATRIXX® exhibits three pore sizes of 300, 500, and 700µ.
- Minimized titanium material resulting in a 75% open porous architecture.

## SURFACE

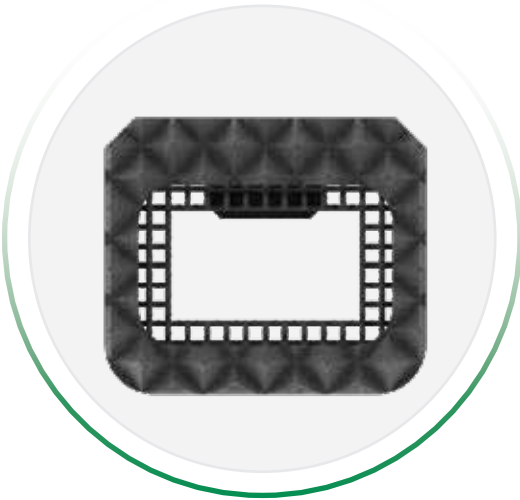
- Nexxt Spine has developed a proprietary, residue free, micro-roughening process that creates a highly cohesive 7µm roughened topography.
- Due to the micro-roughened porous structure of the NEXXT MATRIXX® titanium, the implants exhibit up to 4X more surface area for bone apposition and potential bony integration than conventional spinal implants.

## FEATURES

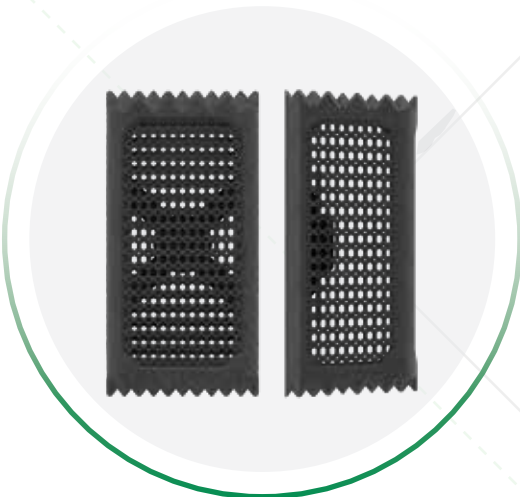
Enabling new corpectomy implant possibilities



Aggressive teeth for secure placement



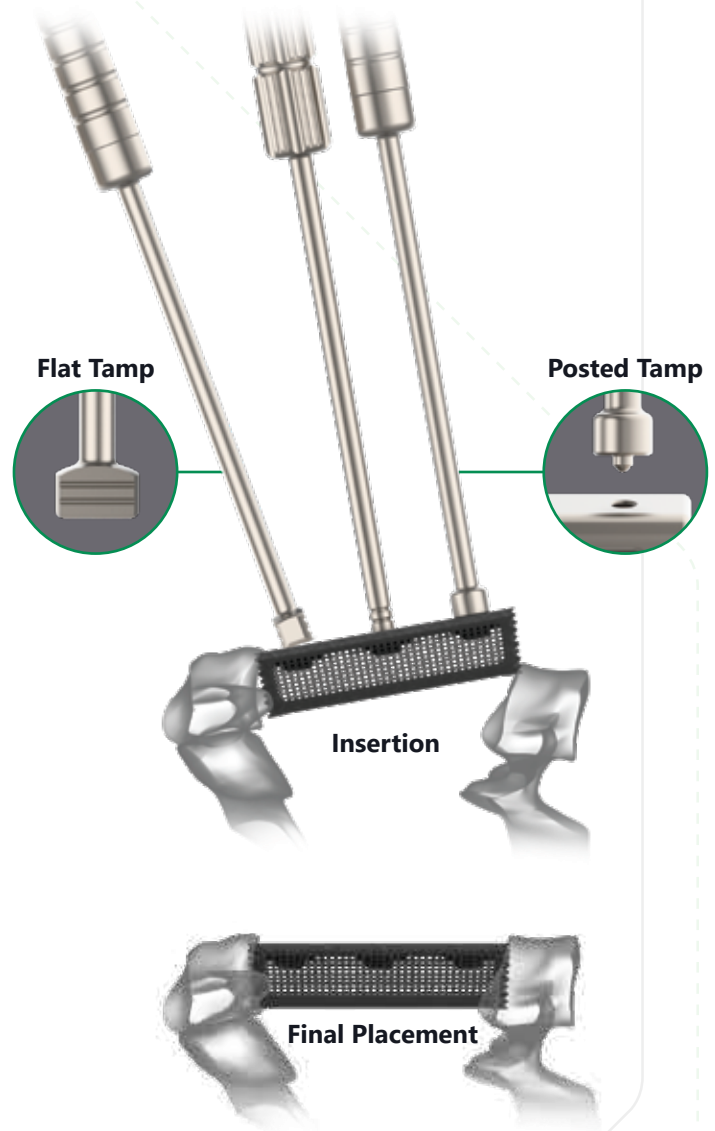
Entire implant graft support



Complete A/P + lateral visualization

## INSTRUMENTATION

For intraoperative optimization



## IMPLANT OFFERING

Accommodation of anatomy

**12D x 14Wmm 0°**

16-40Hmm 2mm increments

**12D x 14Wmm 6°**

11-30Hmm 1mm increments

32-50Hmm 2mm increments

**14D x 16Wmm 0°**

16-40Hmm 2mm increments

**14D x 16Wmm 6°**

11-30Hmm 1mm increments

32-50Hmm 2mm increments